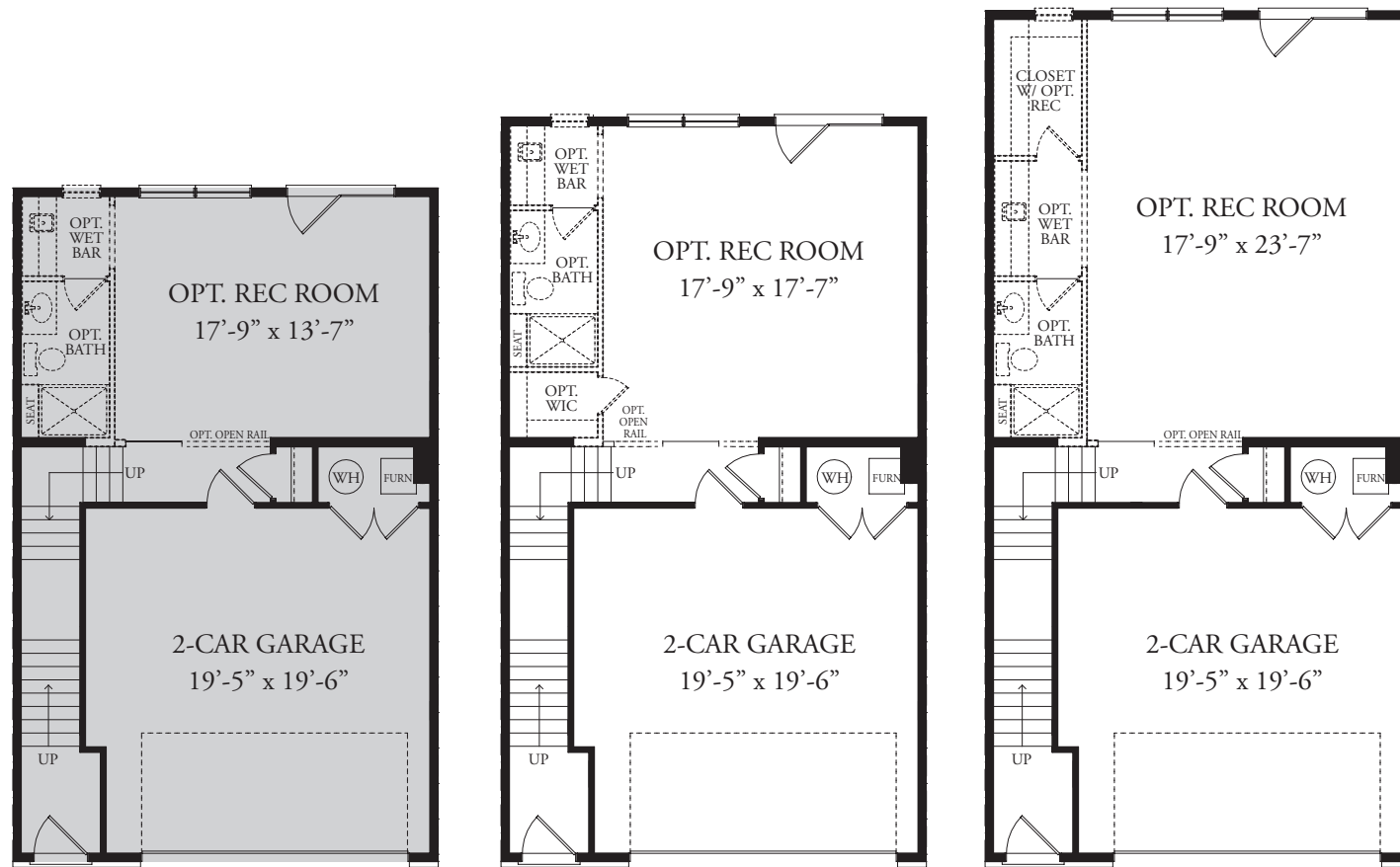


# The Lexington



FIRST FLOOR PLAN

OPT. 4'-0" EXTENSION

OPT. 10'-0" EXTENSION

**The Lexington** — First Floor

**BRYTON HOMES**  
A Georgelas Company



The Lexington

\* Some exterior features shown are optional

The Lexington's impressive layout begins with three bedrooms, two and one-half baths and a two-car garage. Ideal for both relaxing and entertaining, this home's well thought out design and attention to detail are certain to exceed your expectations. The Lexington can reach a total of 3,432 finished square feet allowing for up to four bedrooms and four and one-half baths.

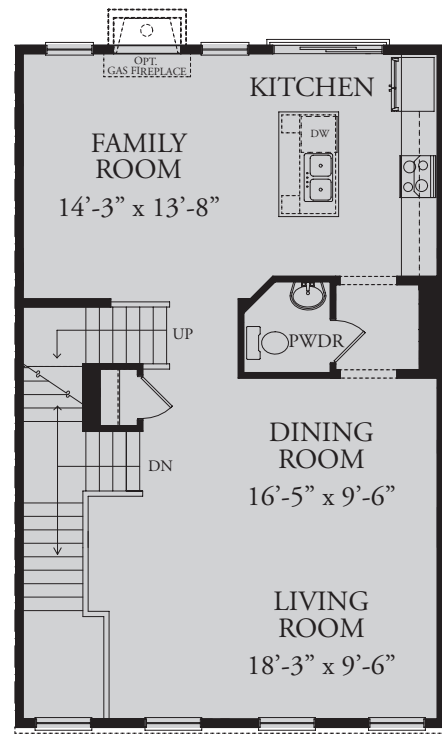
**BRYTON HOMES**  
A Georgelas Company

[www.brytonhomes.com](http://www.brytonhomes.com)

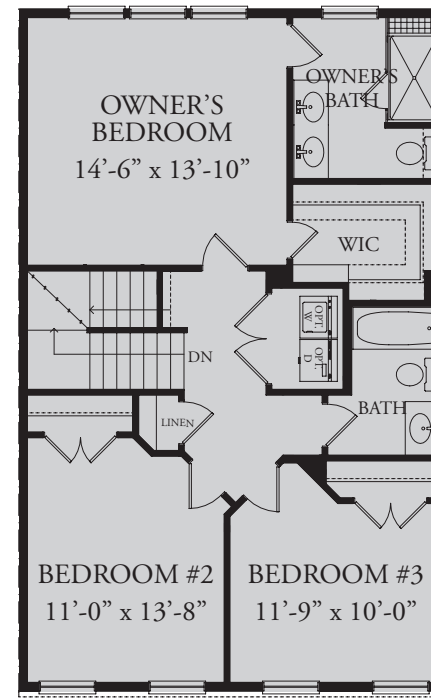
**BRYTON HOMES**  
A Georgelas Company



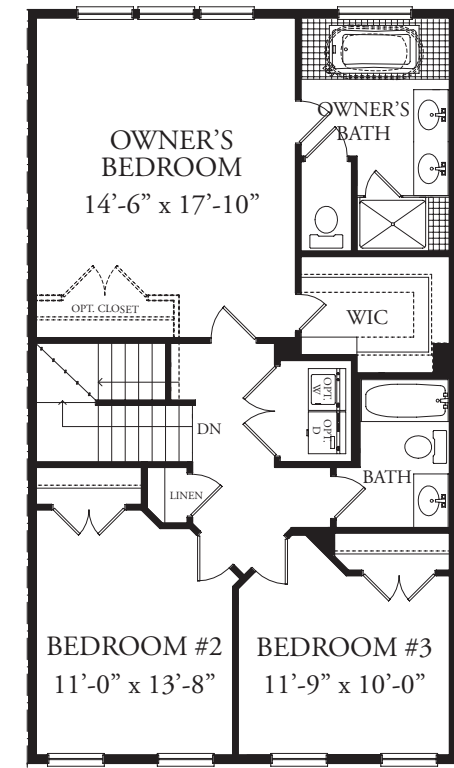
\*This brochure is for illustrative purposes only. Dimensions and features are subject to change without notice or obligations. Features may also be altered to keep pace with the builder's ongoing design improvement program. This brochure is made available for the purpose of illustration and is not part of a legal contract. Price subject to change without notice.



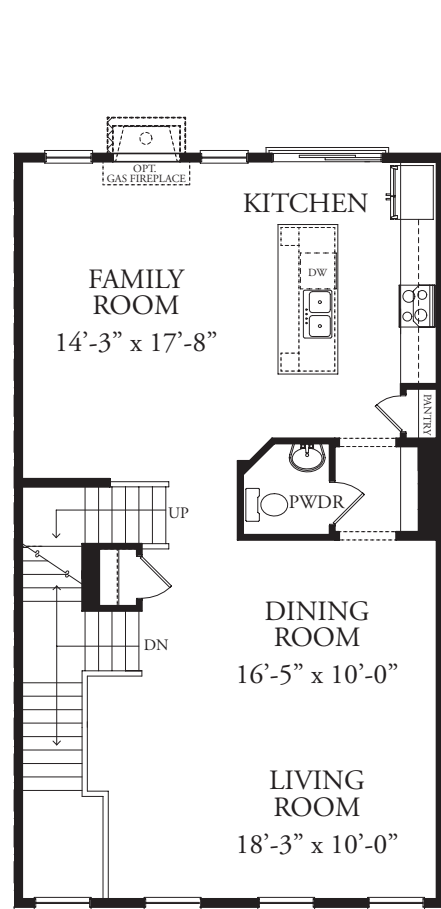
SECOND FLOOR PLAN



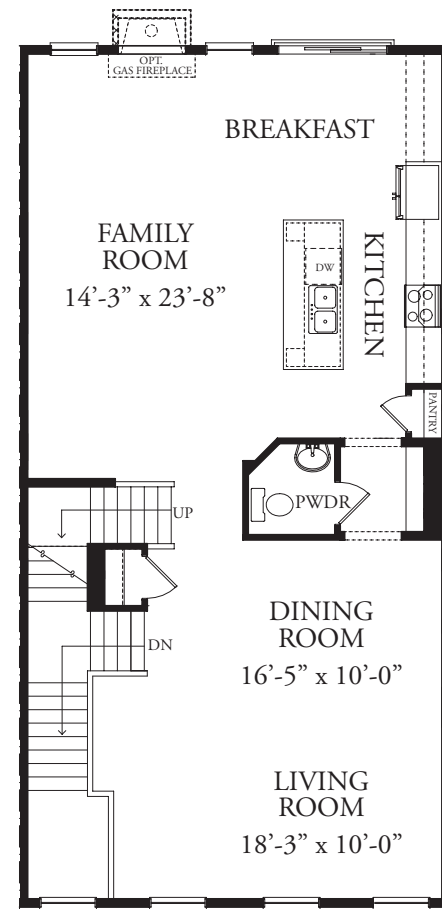
THIRD FLOOR PLAN



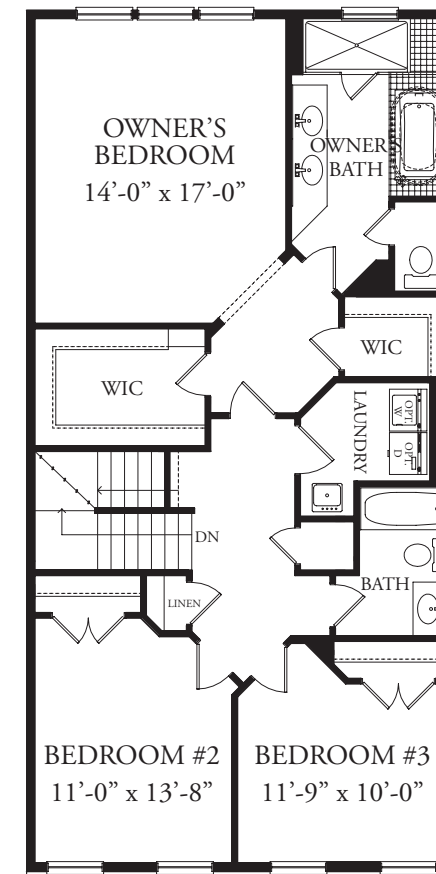
OPT. 4'-0" EXTENSION



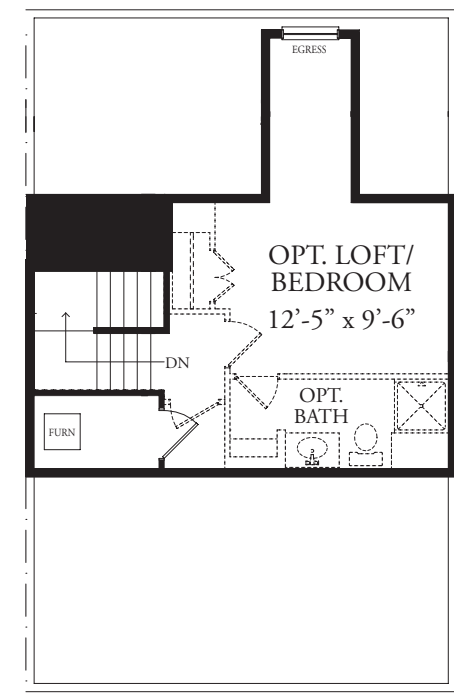
OPT. 4'-0" EXTENSION



OPT. 10'-0" EXTENSION



OPT. 10'-0" EXTENSION



OPT. FINISHED LOFT/BEDROOM