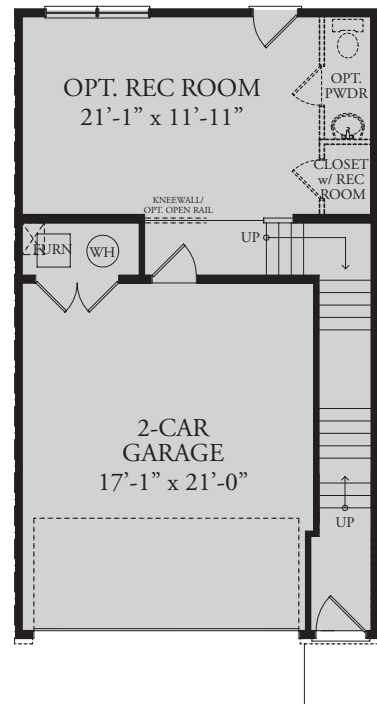
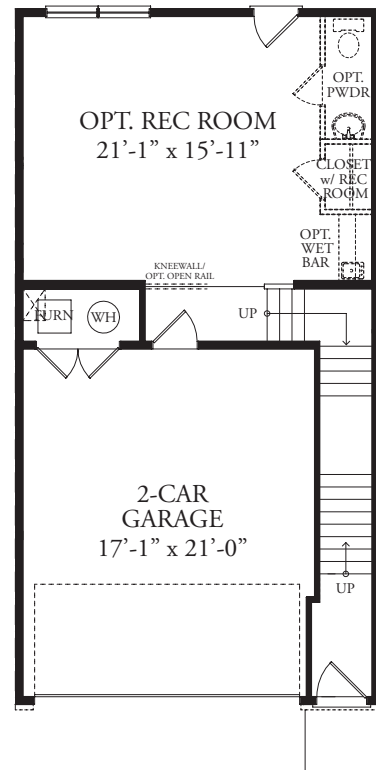


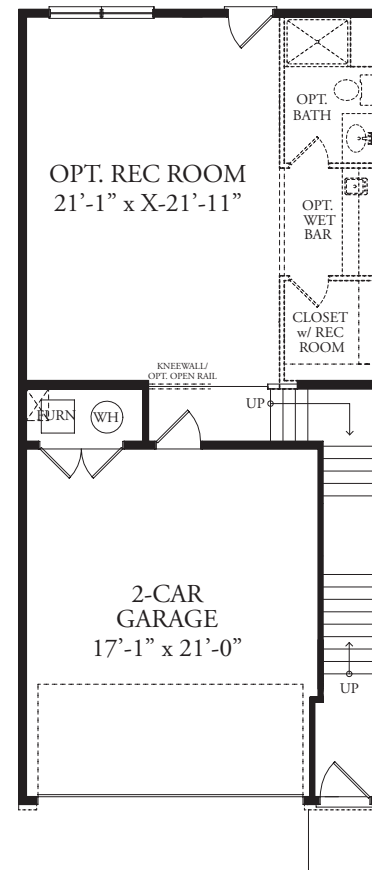
# The Madison



FIRST FLOOR PLAN



OPT. 4'-0" EXTENSION



OPT. 10'-0" EXTENSION

**The Madison** — First Floor

**BRYTON HOMES**  
A Georgelas Company



The Madison

\* Some exterior features shown are optional

The Madison's spacious design consists of three bedrooms, two and one-half baths and a two-car garage. Superior quality and craftsmanship are displayed throughout this open and flexible floor plan, offering customization to complement your lifestyle.

The Madison can reach a total of 3,125 finished square feet allowing for up to four bedrooms and four and one-half baths.

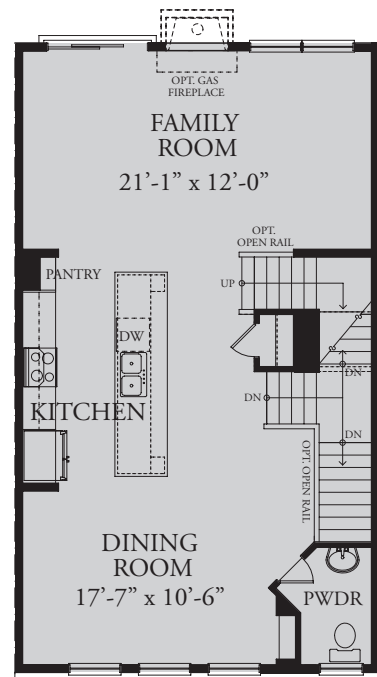
**BRYTON HOMES**  
A Georgelas Company

**BRYTON HOMES**  
A Georgelas Company

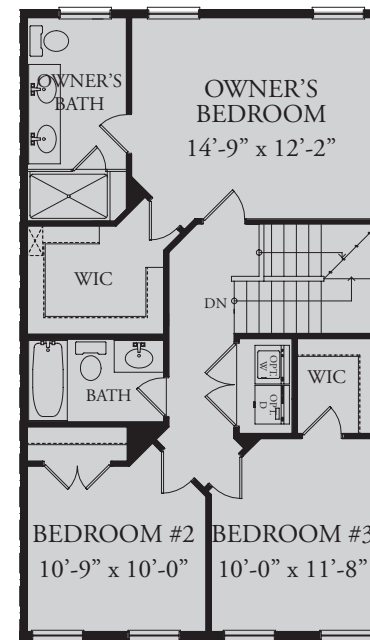
[www.brytonhomes.com](http://www.brytonhomes.com)



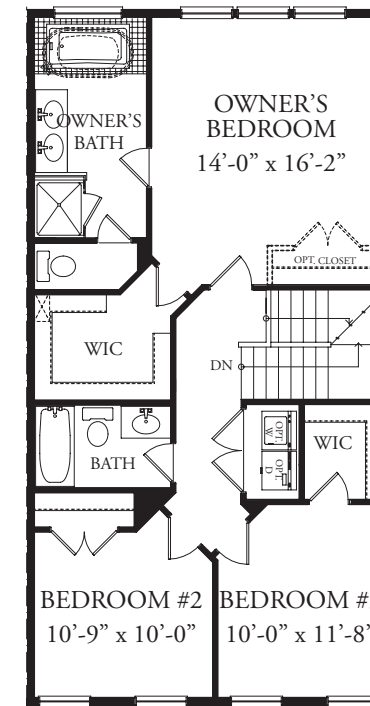
\*This brochure is for illustrative purposes only. Dimensions and features are subject to change without notice or obligations. Features may also be altered to keep pace with the builder's ongoing design improvement program. This brochure is made available for the purpose of illustration and is not part of a legal contract. Price subject to change without notice.



SECOND FLOOR PLAN



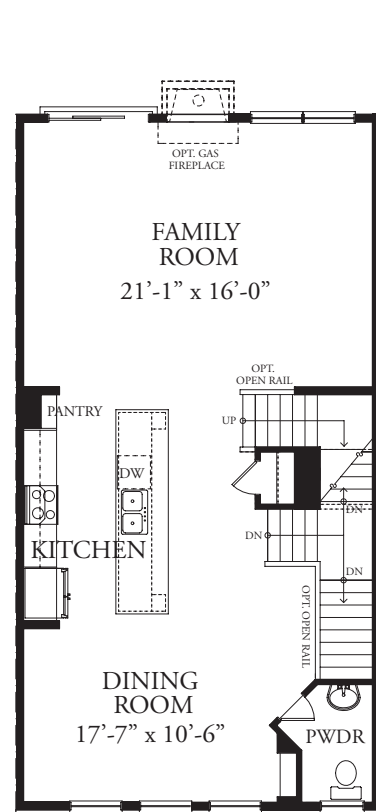
THIRD FLOOR PLAN



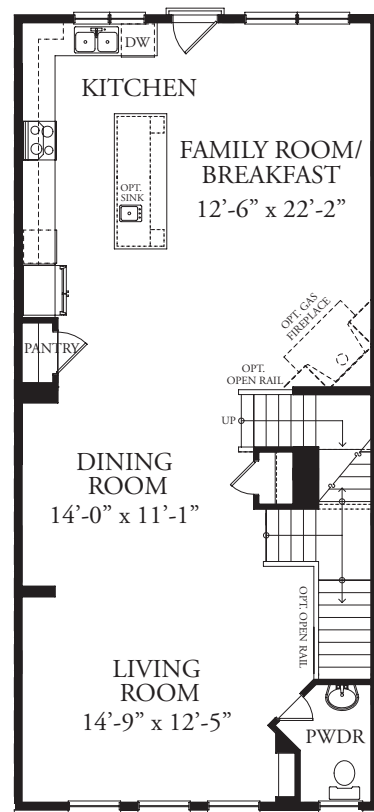
OPT. 4'-0" EXTENSION



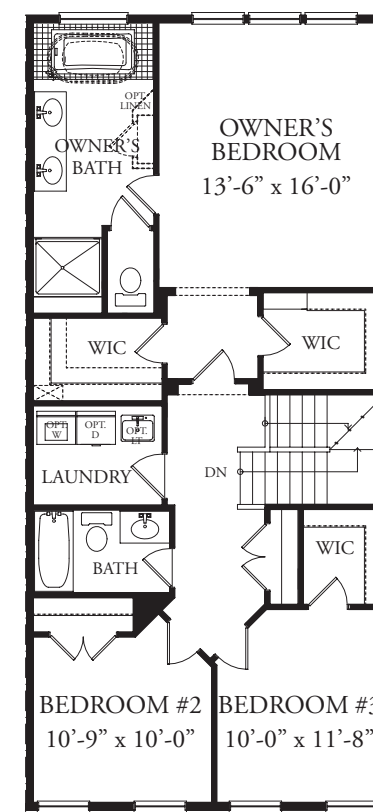
OPT. LUXURY BATH w/ 4' EXTENSION



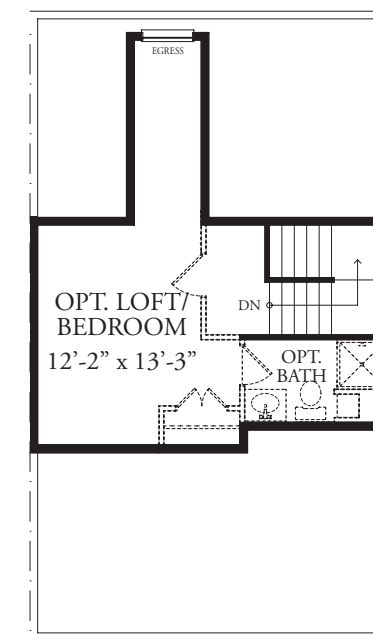
OPT. 4'-0" EXTENSION



OPT. 10'-0" EXTENSION



OPT. 10'-0" EXTENSION



OPT. FINISHED LOFT/BEDROOM